



GLEN EIRA COMBINED PROBUS CLUB INC.

Reg. No A003822970

ABN No. 19438228670

PO Box 124 Glen Huntly 3163

Website: www.gleneiraprobust.com

President

Brian Cooney
9568 0258

Secretary

Lorraine Staggard
9571 5805

Treasurer

Geraldine Monaghan
9569 3570

Outings

Norma Bear
9571 7326
Mobile: 0409 092 032

Dine Outs

Elizabeth Scott
9502 7731

Welfare

Pat Deegan
9571 6617

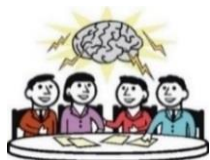
Membership

Ailsa Whitbread
0402 750 931

Newsletter

Chris Strickland
9523 7315

NEWSLETTER NO 253 MARCH 2018



On Friday 23rd February 83 members attended the Meeting at the Bentleigh Club. There were 11 apologies and 9 visitors. We now have a total of 107 active members.

Please remember at the registration desk there are two lists. Pat Deegan has the list that is required for the Bentleigh Club. Ailsa Whitbread has the club attendance records and will mark you off. Make sure that your attendance is noted on both.

NOTIFICATION OF OUR AGM

Final reminder that our AGM will be held on Friday 23rd March, 2018, commencing at 9.45am.

Thank you for your response regarding nominations to the new Committee. If you have any questions please do not hesitate to call Greg Spotkaeff on 9563 5059 for more information or speak with him at the meeting.

A special thank-you to Jack Pattison who once again has agreed to be the Returning Officer for the 2018 AGM and also John Karla who has agreed to be our auditor for 2018.

At our AGM it will be put to the members that we keep our membership dues at \$35.00 pa with a \$25.00 joining fee. Dues must be paid by/at our April meeting but can be paid in March if you prefer.



GUEST SPEAKER

Our speaker for March is Mr Brian Trenfield who will give a presentation focussing on events and experiences, and the emotions that he felt while retracing the steps of the Australian soldiers along the Kokoda Track during an eight day walk.



DINE OUTS

Our Dine-Out in March will be at the Glasshouse on Wednesday 21st March. Situated on the edge of Caulfield Racecourse it has recently been refurbished. The

Glasshouse provides a modern stylish bistro and alfresco style dining. Seniors meals are available: 2 courses for \$12 or 3 courses for \$14. Also included is a \$3 voucher to spend at the venue.

The venue for our April Dine Out is Mapleton Kitchen at 345 Glen Huntly Rd, Elsternwick. The cuisine is Australian, Italian and Spanish. A Vegetarian option is available. The No 67 tram passes the door or you can find parking in surrounding streets.

SUMMER BBQ'S

Our next summer BBQs at Harleston Park, Seymour Road in Elsternwick are on Saturdays 10th and 24th March commencing at 5.00pm. Please bring your own food and drinks. The final BBQ will be on April 14th.



CARD & GAMES DAYS

The Card Group play Five Hundred on the first and third Monday of each month at Geraldine's home in Caulfield

South. If you wish to join the group please ring Geraldine Monaghan on 9569 3570.

The next Games Days will be on Monday 12th March (Labour Day) and 9th April commencing at 1.30pm at Pam Ryan's home in Murrumbena. Please make sure you put your name down on the list as numbers are limited. Contact details for Pam are 9570 1878. Should there be changes to the venue we will contact participants.



MORNING MELODIES

Morning Melodies at the Bentleigh Club on Thursday March 15th will feature Rene Diaz.

The following Morning Melodies is on Thursday April 19th and features Damian Mullin. Morning Melodies in May is on Thursday 17th and features the ever popular Col Perkins.

The cost is \$17 for lunch and the show or \$10 for the show only. Arrival at 10.00am, show starts at 10.30am. Lunch is at 12.00 noon.

The first "Groovin' Easy Sunday" for 2018 featuring Michelle Forbes is on March 18th. The cost for this is \$25 for Afternoon Tea and the Show, from 2.00pm - 5.00pm. Please contact Ailsa Whitbread on 0402 750 931 immediately if you would like to attend any of the above.



OUTINGS

We depart the Bentleigh Club at 9.00am for our visit to the Blue Lotus Watergarden on Friday March 16th. This trip includes morning tea and a boxed lunch at the Watergarden. The nursery and gardens officially opened in 2006. The garden has grown to over 50,000 square metres with thousands of exotic and native flowering plants featuring waterlilies, lotus & other rare plants. It also has dozens of ponds and two lakes all connected by walking tracks and 15 ornate bridges. Other attractions include four greenhouses that grow rare plants such as the world's largest lily species, the spectacular Giant Amazon Lily - Victoria Cruziana.



Our outing to Kerrisdale Mountain Railway will be on Friday April 20th. The cost is \$55.00 payable at our March meeting. **Please note that departure time for this trip is**

8.30am. Do not be late. It is not fair to the other 40 or so members who arrive on time. The Kerrisdale Mountain Railway is based in Kerrisdale, approximately half way between Seymour and Yea.

This unique narrow gauge steam railway climbs the steep grades and tight curves of the Tallarook Ranges in a zig zag formation, and upon reaching the top you can enjoy magnificent 360 degree panoramic views of the entire Goulburn Valley and beyond. While in Kerrisdale we will have time to explore the Railway Museum with its restored engines and memorabilia from a bygone era then enjoy a lovely lunch of gourmet sausages (hand made by the local butcher) with fresh bread and salad. You will have plenty of time to enjoy this stunning location before heading home.

A list is out for our visit to the Jewish Museum on Tuesday 22nd May. The cost is \$15 which includes morning tea. Further details will be in our next newsletter.

Please remember payments for outings must be in an envelope with your name, amount and outing on the outside. They will not be accepted otherwise.

EXTENDED TRIP

Final payment for our Extended Trip to Port Stephens and the Hunter Valley, NSW is due at our March meeting. Norma has contacted participants with final pricing.

BIRTHDAY LUNCHEON

In the past, following our Birthday meeting in April, members have stayed on for a celebratory lunch at the Bentleigh Club. For catering purposes Norma will have a list out at this meeting for the names of those interested in staying on Friday April 27th

PROBUS ANNUAL BOWLS DAY

A reminder for members to attend the Annual Bowls Day on Wednesday March 21st at Burden Park, Springvale to cheer on our team. Please be there around 9.30 - 10.00am for a 10.30am start. We wish Priscilla Olsen, Peter Guttmann and David Morris all the best. Further details can be obtained from Robin Wood 9579 3264.



HOME MAINTENANCE

A list has been compiled of contractors in the local area who have been recommended by our members for various jobs, such as painting, plumbing, handyman services, etc. The list is managed by Pam Ryan who can be contacted on 9570 1878.

Please let Pam know if have any additions for this list and let her know if you have any complaints. Copies are available at the registration desk.



EXCHANGE TABLE

The book exchange table will operate once again at our March meeting. Please keep this activity going by taking a bag of books home after the meeting and return them next time.

There are no storage facilities at the Bentleigh Club so we need your help.

NEXT MEETING

Our next meeting plus the AGM will be held on Friday 23rd March commencing at 9.45am. **Please note that there are 5 Fridays in March and the meeting is on the 4th Friday not the last.** Please remember, for Probus insurance purposes, to sign the "early departure book" if leaving the meeting early.